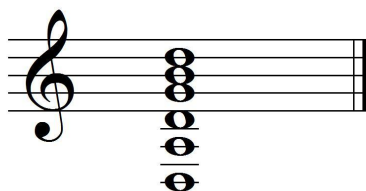


# Wintersong

by Alan Hirsh

⑥ & ① = D

TUNING



Includes:

REAL score—sounds as written

SCORDATURA score—sounds transposed

# Wintersong

Gently  $\text{♩} = 73$

(REAL)

A. Hirsh

⑥ & ① = D

*mp*

5

9

13

*m i a m i m i a m i m i a m i*

17

*m i m a i m a i*

21

*a i m a i*

25

29

*m i a m i m i a m i*

*rit.*

Wintersong (REAL)

*a tempo*

33 *mf* *m a i* *B* *pont. m i a* *ord.*

38 *VII* *B*

42

47 *rit.* *a tempo* *p i m* *a i m*

52

56 *m i* *p*

60 *p i m* *m i a m i* *m i a m i*

65 *m i a m i* *rit.*

The image shows a musical score for a piece titled "Wintersong (REAL)". The score is written in treble clef with a key signature of one sharp (F#) and a time signature of 3/4. It consists of eight staves of music, numbered 33 through 65. The first staff (33) begins with a dynamic marking of *mf* and includes fingerings (3, 4, 2) and accents for the notes *m a i*. A bracket labeled *B* spans the first two measures. The second staff (38) features a *VII* chord marking and a *B* bracket. The third staff (42) continues the melodic line. The fourth staff (47) includes a *rit.* marking followed by *a tempo*, and dynamic markings *p i m* and *a i m*. The fifth staff (52) shows a melodic phrase. The sixth staff (56) has a *m i* marking and a *p* dynamic. The seventh staff (60) contains the lyrics *m i a m i* and *m i a m i*. The eighth staff (65) ends with a *rit.* marking. The score includes various musical notations such as slurs, ties, and dynamic markings.

# Wintersong

(SCORDATURA)

A. Hirsh

Gently  $\text{♩} = 73$

⑥ & ① = D

*mp*

B

13

17

21

25

29

*rit.*

Wintersong (SCORDATURA)

*a tempo*

33 *mf* *m a i* *B* *pont. m i a* *ord.*

38 *VII*  $\text{\textcircled{6}}$

42

47 *rit.* *a tempo* *p i m* *a i m*

52

56 *m i* *4 2 4 3 p*

60 *p i m* *m i a m i* *m i a m i*

65 *m i a m i* *rit.*